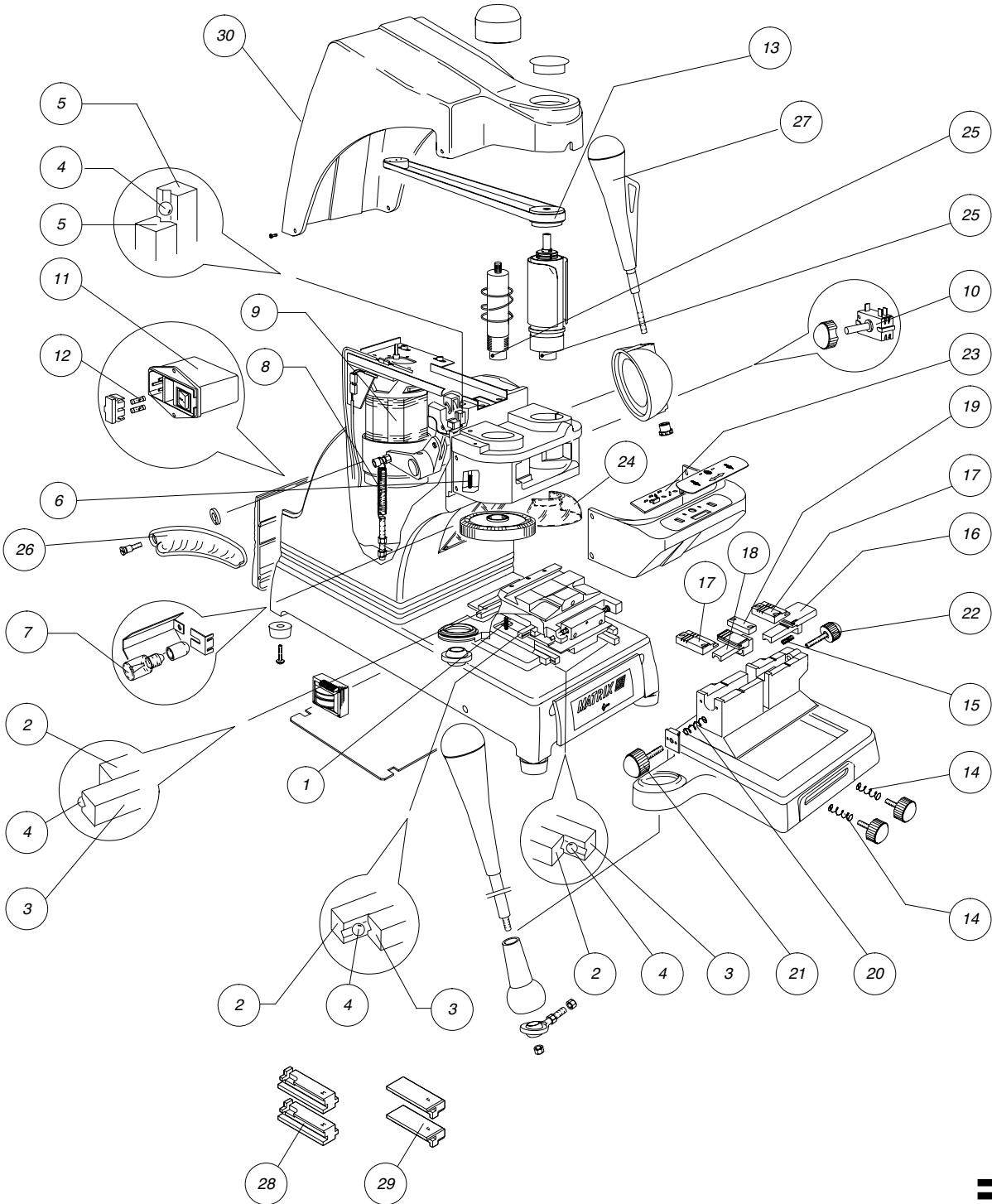


Matrix S



Matrix S

	Description	Part Number	Item Number		Description	Part Number	Item Number
1	Ball Shutter	D901041ZR	BJ0258XXXX	21	Left Clamp Knob (Assy)	D910637ZR	BJ0110XXXX
2	Clamp Carriage Guide	D910473ZR	BJ0095XXXX	22	Right Clamp Knob (Assy)	D910638ZR	BJ0111XXXX
3	Carriage Guide Clamp	D910785ZR	BJ0116XXXX	23	LED Circuit Board	D910775ZR	BJ0115XXXX
4	Balls Set (12pcs)	D910571ZR	BJ0104XXXX	24	Protective Shield	D910421ZR	BJ0094XXXX
5	Vertical Carriage Guide	D910475ZR	BJ0096XXXX	25	Tool Locking Screw	D900441ZR	BJ0249XXXX
6	Shutter Screw Pin	D302130ZZ	BJ0434XXXX	26	Finger Rest	D110461FA	BJ0020XXXX
7	Lamp Bulb	D300695ZZ	BJ0685XXXX	27	Depth Lever Handle (Right)	D410214ZF	BJ0742XXXX
8	Vertical Carriage Spring	D910558ZR	BJ0102XXXX	28	Mercedes Adaptor	D410533BA	BJ0582XXXX
9	Motor	D902014ZR	BJ0219XXXX	29	Fichet Adaptor	D410534BA	BJ0583XXXX
10	Commutator/Switch	D910789ZR	BJ0117XXXX	30	Upper Cover	D110215FA	BJ0019XXXX
11	Main Switch	D910581ZR	BJ0106XXXX	n/s	Sponge For Upper Cover	D310586ZZ	BJ0474XXXX
12	Fuses 2amps (Rapid Fuses)	D309226ZZ	BJ0473XXXX	n/s	Allen Key 2.5mm	D300222ZZ	BJ0649XXXX
13	Flat Belt	D910576ZR	BJ0105XXXX	n/s	Allen Key 4mm	D300224ZZ	BJ0651XXXX
14	Spring (Carriage) Knob	D405454ZZ	BJ0561XXXX	n/s	Steel Tip Stop Set	D402302BA	BJ0547XXXX
15	Spring (Right Clamp)	D910555ZR	BJ0101XXXX	n/s	Power Cord	D706590ZB	BJ0385XXXX
16	Mobile Jaw (Right Clamp)	D910488ZR	BJ0097XXXX	n/s	Lower Ball Joint	D310579ZZ	BJ0835XXXX
17	Fixed Jaw For Clamp	D910490ZR	BJ0099XXXX	n/s	LED Grey Cover (Only)	D111048FA	BJ0792XXXX
18	Mobile Jaw (Left Clamp)	D910489ZR	BJ0098XXXX	n/s	Carriage Lever	D410213ZF	BJ0578XXXX
19	Holding Plate	D910491ZR	BJ0100XXXX	n/s	Matrix Box	D410969ZZ	285205
20	Spring For Left Clamp	D910560ZR	BJ0103XXXX	n/s	Instruction Manual	D411773XA	132018